

The Growing Earth

David de Hilster

1360 Redondo Ave. #301, Long beach, CA 90804; david@dehilster.com

Abstract

It is quite obvious to most casual observers that South America and Africa were at one time joined. But it is quite unknown to almost all that Asia, Australia and the Americas also were at one time joined. This evidence leads to only one conclusion: 200 million years ago, the earth's continents were all together on a much smaller orb and since then, the earth has been growing significantly. There is strong visual evidence that other bodies in the universe are also growing including other planets and moons. Although there currently is no one accepted mechanism that causes this growth, there are a number of scientists proposing mechanisms although it will probably take some time for these to be confirmed experimentally. In the mean time, evidence is mounting that the earth has grown including in the areas of geology, paleontology, flora and fauna fossil records, GPS, and simple physics that clearly show that the earth's diameter and mass have been increasing and continues to do. This evidence points to the most important question in science today: what is the mechanism that causes this growth? Although not covered in this paper, this mechanism must necessarily span the subatomic to the macro structures such as galaxies and everything in between.

History.....	3
Visual Evidence.....	4
Atlantic fit	4
Pacific Fit	5
Sea Floor Bottom Maps.....	6
Spreading Contours and Growth Patterns	6
The Continents Fit onto A Small Orb	7
Growth Fractures.....	8
Celestial Body Expansion	8
Earth's Moon.....	9
Mars.....	9
Moons of Jupiter.....	10
Eruopa	10
Ganymede.....	11
Leading People in the Field.....	11
Professionals.....	11
Serious Amateur Scientists	11
Trans-Pacific Sister Taxa	12
Paleo-Magnetic Pole Evidence.....	12
Space Geodetics	13
Mountain Building (Orogen) And Continents	14
Mechanisms for Expansion.....	14
Aether.....	14
Accretion	15
Dirac's	15
Atomic Core Reactions	15
Neal Adams Prime Matter.....	15
Graviton.....	15
Expanding Versus Growing	15
Water, Oil, and Salt.....	16
Super-Sized Animals.....	17
Barriers to the Growing Earth Theory.....	17
Historical	17
Subduction.....	18
Pangaea.....	19
No Known Growth Mechanism	20
This Would Change Everything.....	21
New Explanations of Known Evidence	21
South America and Africa Curvature Match.....	22
Pacific Rift Contour Matches.....	22

Conclusion.....	23
Books.....	23
References.....	23

History

The history of the growing earth has its origins in the visual observation that the continents "fit" together like a puzzle if moved together. Most notably, Africa and South America were seen to fit together quite strikingly. It was observed as early as 1596 that the opposite coasts of the Atlantic Ocean have similar shapes and seem once to fit together [1]. Historical figures also of note have recognized this visual clue including Sir Francis Bacon, Antonio Snider-Pellegrini, and Benjamin Franklin.

Here are some of the milestones in the development of the growing earth theory:

1596: Abraham Ortelius, a Flemish cartographer was the first to propose continental drift. It is important to remember that the Americas only started to be mapped 100 years earlier.

1858: Antonio Snider-Pellegrini, a nineteenth century French geographer and scientist drew the first known map where the continents were purposely drawn together.

1888: Ivan Osipovich Yarkovsky, a Russian-Polish civil engineer, suggested that some sort of aether is absorbed within the earth and transformed into new chemical elements, forcing the celestial bodies to expand.

1889 and 1909: Italian geologist Roberto Mantovani suggests the continents fit together on a smaller globe

1928: geologist Arthur Holmes first proposes the mainstream's current reason for continental movement: convection currents within the mantle.

1933: Otto Hilgenberg constructed the first globe models of an expanding earth.

1956: Samuel Warren Carey a geologist from Australia who is even today considered instrumental in helping develop the continental drift theory converts to the growing earth theory when he cannot fit Pangaea together on a fixed radius globe. He becomes known as the modern father of the growing earth theory.

1960s: Sea floor spreading is found and sea floor ages 200 million years old and less, shocking the geological community.

1970s and 1980s: Debate follows the sea floor ages and subduction saves the fixed radius earth

1990s: Plate Tectonics becomes entrenched yet a growing number of problems emerge with this theory

2000s: Resurgence and growing number of people learning about the growing / expanding earth via the internet - over one million views of Neil Adams videos describing a growing earth, moons, and planets.

Visual Evidence

One of the most important pieces of proof for the growing earth and celestial bodies are the multitude of visual clues. They started over 400 years ago with the fitting together of South America and Africa and have been augmented by very recent data from our solar system as late as 2006.

Atlantic fit

It is quite easy to see that the Atlantic Ocean must be growing giving the "fit" between Africa and South America. The first visual representation of this was by Antonio Snider-Pellegrini in 1858.

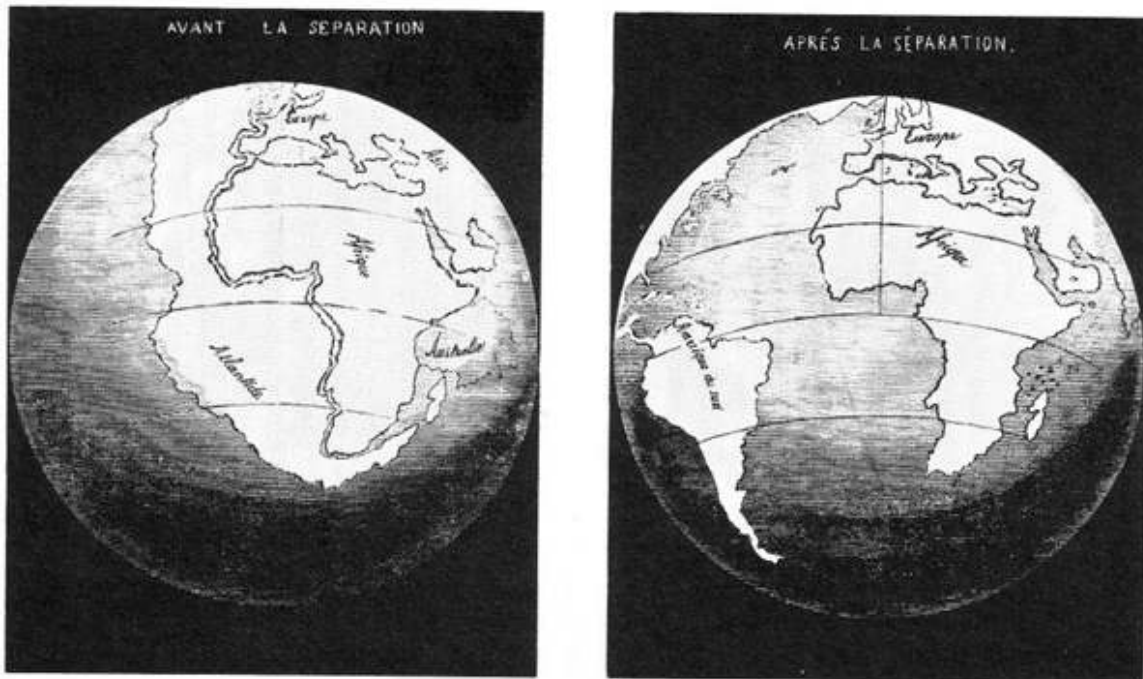


Figure 1 - First known drawing of the continents together by Antonio Snider-Pellegrini in 1858

There is now measurable evidence of the Atlantic rifting on land in Iceland where the Island is spreading at the rate of 2 centimeters a year showing that the Atlantic Ocean ridge is also spreading. This is equivalent to about 2 meters in a human lifetime.

The fixation with the Atlantic comes from the fact that the Atlantic has undisputable "visual" evidence of once being



Figure 2 - The Pacific Blind Spot

together and now confirmation of measurable spreading on Iceland.

Pacific Fit

The Pacific on the other hand has two handicaps. The first is that the visual clues are impossible to see on a globe given that from the Pacific side, you can't see the edges Asian and American continents at the same time. This is a "Blind Spot" that prevents any visual queue that continents lining the Pacific in fact fit together. This is only obvious when looking at certain type of map projections.

The second handicap is that it is bigger because it was the first place to split when the earth expanded. This evidence was not understood completely until the 1960s when the ocean bottoms were mapped and aged. Once this was done, the "path" of expansion could be traced back, and the Pacific "fit" could be reconstructed.

The fitting of continents in the Atlantic are simple to see because they are very close on the globe and map and the match is visually apparent.

Two obvious visual clues do exist today when studying flat maps of the Pacific with some sea bottom: Australia and South America fit nicely together (figure 3), as do North America and the sea floor contours next to Asia (also figure 3) [2].

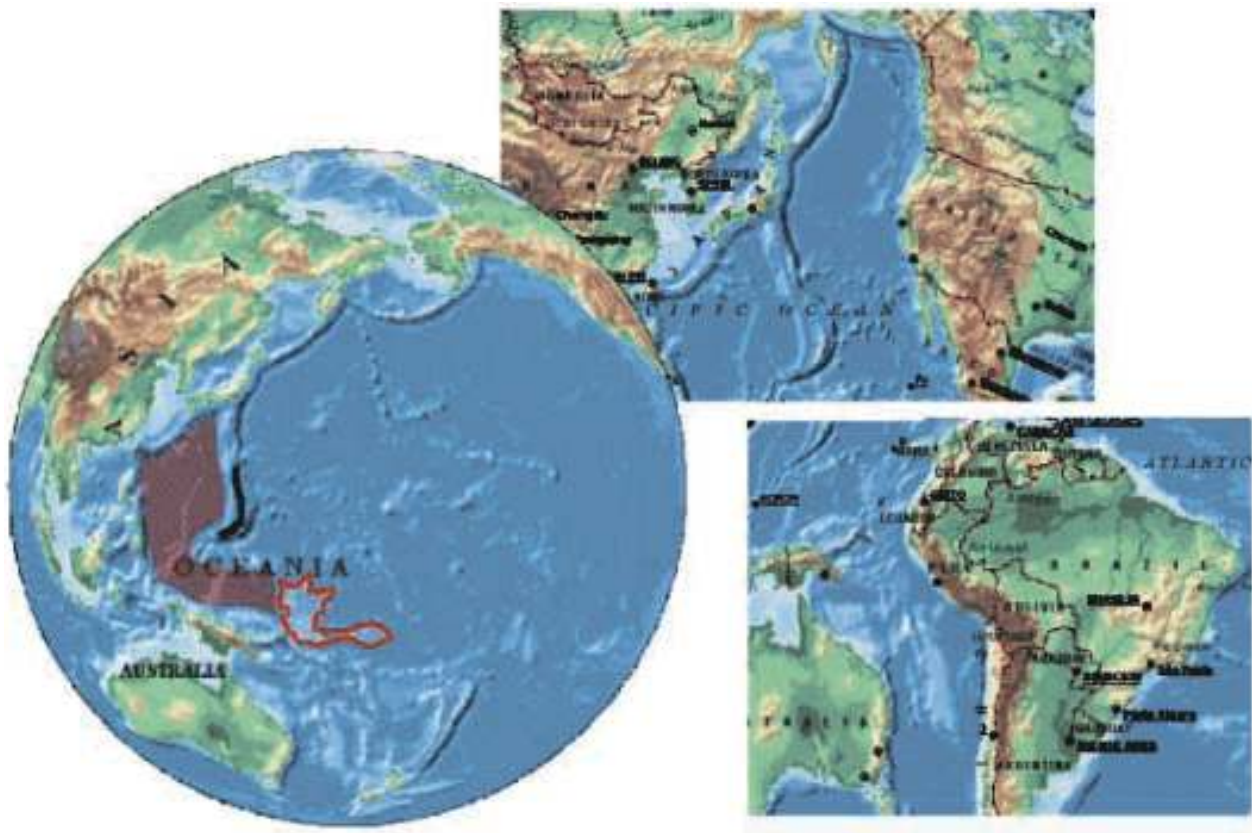


Figure 3 - Pacific Matching Shorelines

Sea Floor Bottom Maps

One of the most important pieces of recent evidence for a growing earth came in the 1960s with the dating of the sea floor by the U.S. Navy. The dating information stunned the geologists in that no sea floor was found to be more than 180-200 million years old. With the earth thought to be 3.5 – 4 billion years old, the sea floor ages were extremely new in comparison. The data is now in the hands of the National Geophysical Data Center which is part of NOAA: The National Oceanic and Atmospheric Administration. There you can get a very detailed map of the dates of the ocean floor. [3]

The expansionists took this data and used it by systematically removing the youngest sea floor segments and reconstructing the earth on the smaller globe until the entire sea floor was gone. This gave a scientific method to expansionists as to their reconstructions of smaller globes.

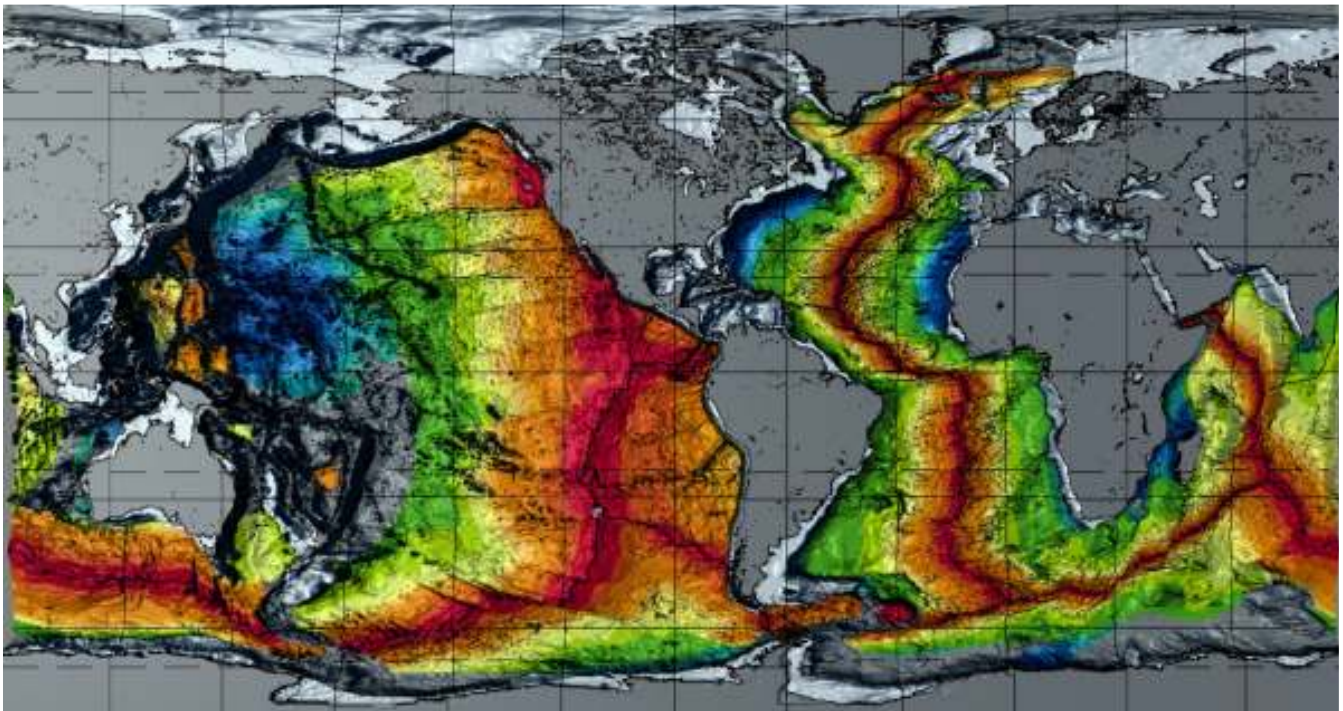


Figure 4 - Sea Floor Bottom ages in tens of millions of years as published by NOSC

Spreading Contours and Growth Patterns

Once the sea floor bottom ages were mapped along with their topography, it became quite clear that the sea floor was expanding all around the globe. The expansion can visually be seen by looking at the sea floor and is characterized by long straight parallel mostly horizontal and vertical angles lines.

The other factor that points clearly to a growing earth is that the contours of the Pacific coastlines of the Americas, is reflected in the Pacific spread or rift, and the sea floor

contours on the Asian side. This reflecting of the contours can also be seen in Antarctica where the rift contours the Antarctic continental contour almost perfectly (figure 4).

The Continents Fit onto A Small Orb

The most striking visual evidence of the earth growing is when the sea floor is systematically removed by age, the continents fit together without any change on a smaller orb. The mathematical chance that all the continents fit together on a smaller orb is quite astronomically small given that plate tectonics describe a process whereby the continents morph, twist, and float about at an incredibly varied fashion. The growing earth theory removes the sea floor and with no change in continent shape, and only a few areas of rotation as dictated by magnetic striping, has the continents come together, perfectly fitting like a jigsaw puzzle. How proponents of the fixed radius earth argue this point away is by not addressing this issue at all.

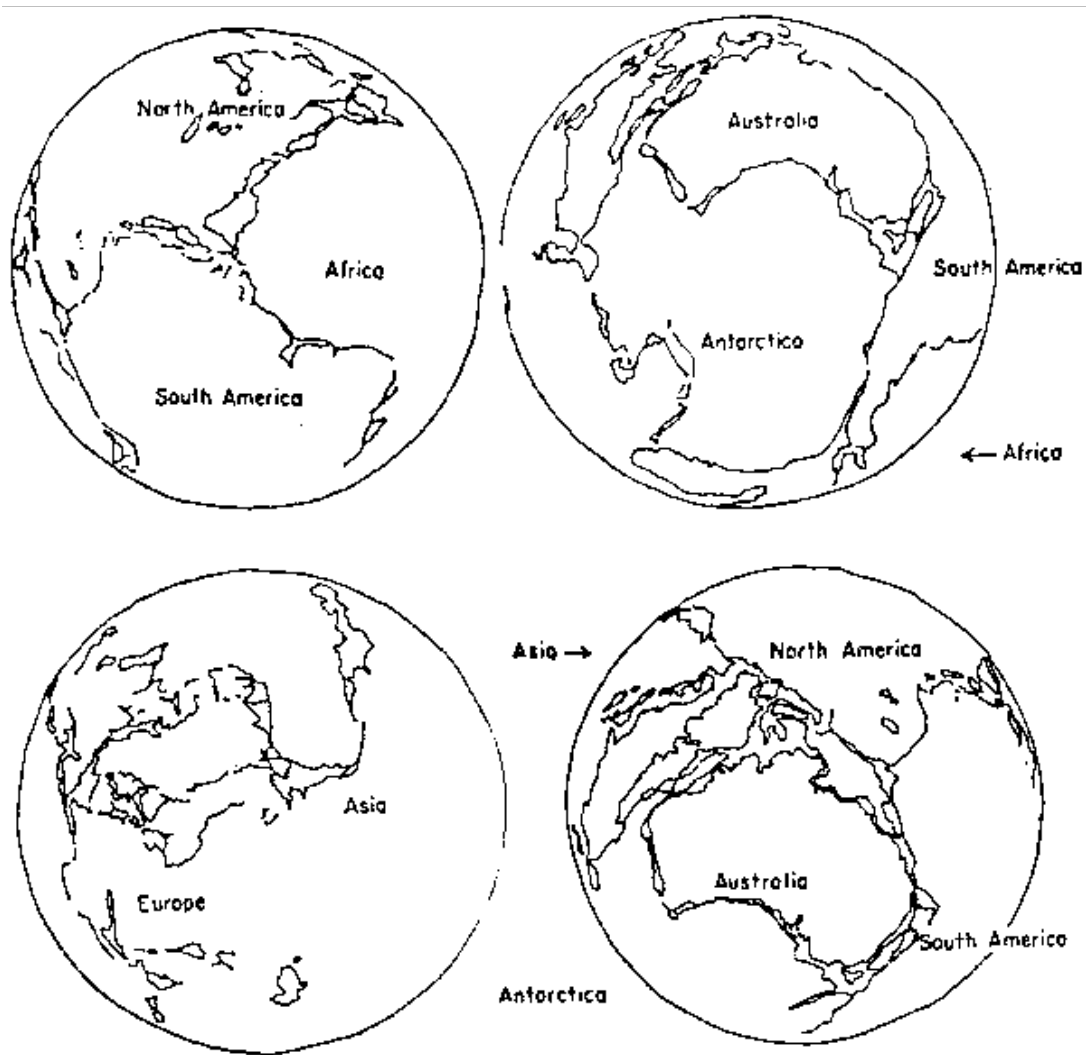


Figure 5 - The continents fit together with little deformation on a smaller orb

Growth Fractures

By visual inspection, one can see growth fracturing at different levels geologically. Some of the types that have been characterized and described are cuts (rills on moons and planets), furrows (inlets on coastlines), and shatter fractures such as the basins and swells that occur on continents and the ocean floor as shown on an expanding soccer ball and Africa below [4].

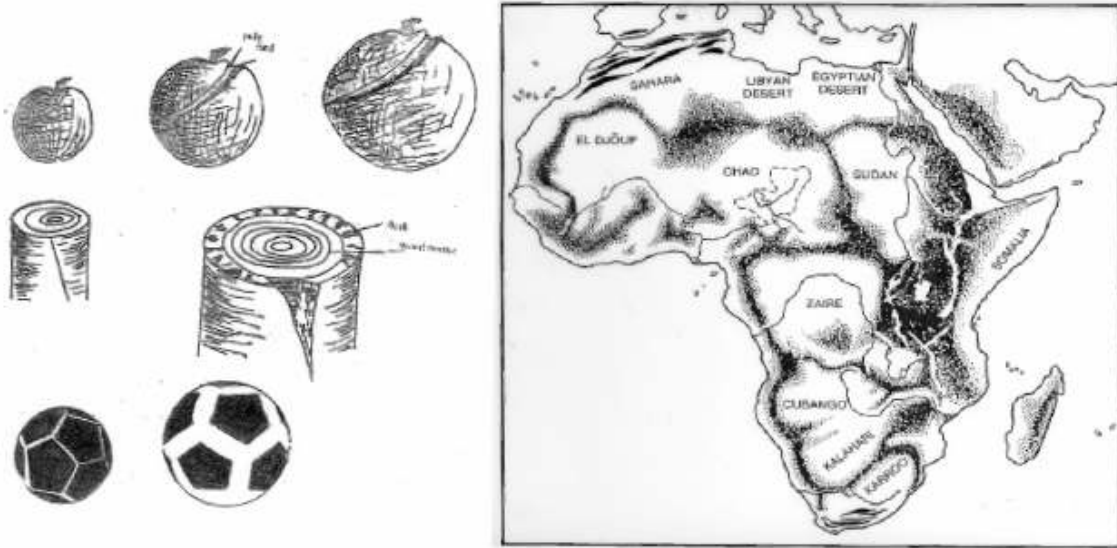


Figure 6 - Growth fracture types as described by Shehu (right) and shatter fracturing as exemplified by Carey on the continent of Africa

Celestial Body Expansion

The obvious question arises: if the earth is expanding, are other celestial bodies also expanding?

Much of the work in this area has been done by Neal Adams who has taken topographical and surface photo montages of some of the moons and planets in our solar system, and has applied some basic visual clues as well as scientific principles to reconstruct the expansion of bodies other than the earth.

Using many of the same principles applied with the sea floor data both scientifically and visually, Adams has succeeded in giving very compelling visual demonstrations of celestial body expansion in our solar system.

Earth's Moon



Figure 7 - The two faces of the moon: (left) the growing side with Mares, and (right) the far side with no growth eruptions (from Neal Adam's Videos, 2002)

The earth's moon has some interesting characteristics that show that in fact it may be expanding. Several techniques are used by Adams to find the "older" continental areas: elevation, mountains, impact crater density, and color.

The "mares" or seas on the moon are characteristically lower, darker, and have fewer impacts or craters. The original crust is characterized by higher elevation, a lighter color, and more impact craters.

Neal Adams using these clues has succeeded in animating the moon's expansion by eliminating these areas and fitting the older crust onto a smaller orb.

Another very important observation for an expanding moon is the fact that the spreading seems to be only on the side facing the earth. Since the moon has constantly one side facing the earth, the expansion seems to be only on the side closest to the earth. Visual evidence actually supports this. The explanation given by Adams is that the gravitation of the earth is causing the moon to expand on the side with less gravitational pressure than on the dark side (figure 7) [5].

Mars

Thanks to the Mars Global Surveyor, there are now elevation maps of the entire planet. Neal Adams using this data and the same methods used for earth's moon could get an accurate reduction of Mars down to the size of earth's moon. The color of the surface and cratering also give clues as to how expansion took place on the red planet. [6]

Moons of Jupiter

Probably the most striking evidence of celestial body expansion is Neal Adams work with Europa and Ganymede, two moons of Jupiter. Although there is no elevation information, the visual clues are almost undeniable.

Europa

Europa has striking evidence of expansion and is even admitted by NASA to expand. NASA states on their website that "Heat generated by the expansion and contraction may be enough to melt part of the crust underneath the surface." [8] Neal Adams has put together compelling visual evidence from NASA photos where he has closed up expansion gaps to show that the sides match up perfectly including completing lines that were split up by the expansion (figure 9) [9].

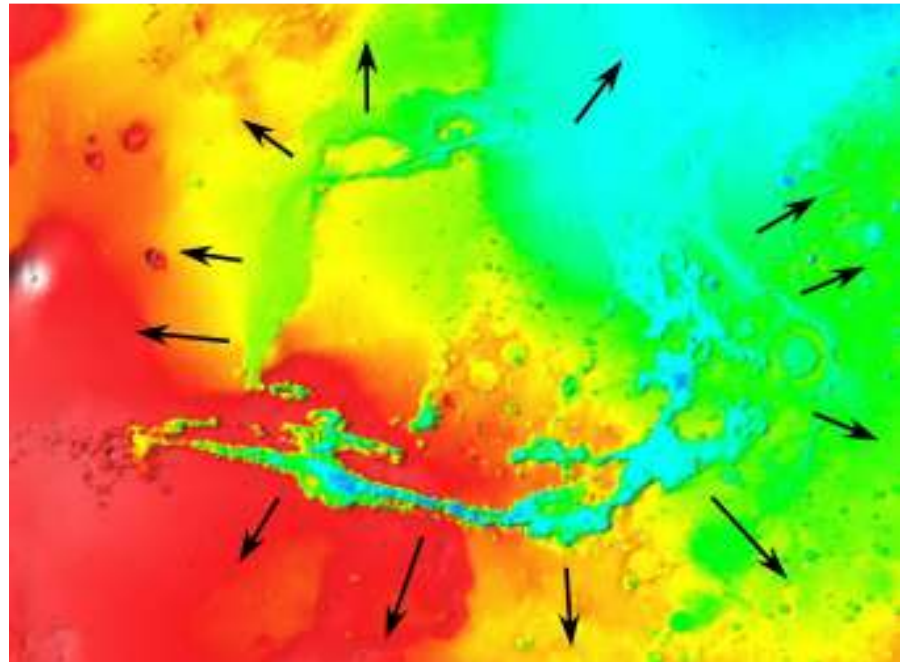


Figure 8 - Mars Growth in the pattern of growth fracturing that created the large canyon "Valles Marineris"

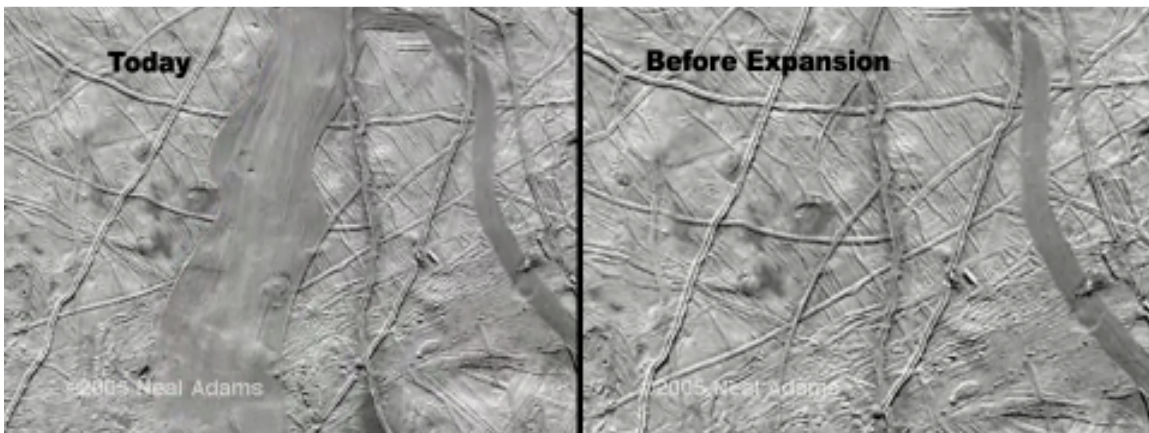


Figure 9 - Expansion on Europa: (left) the current picture with the growth pattern in the middle, (right) what it looked like before the growth - notice the perfect matching of the lines that were cut by the expansion (from Neal Adams video on Eurpoa)

Ganymede

Ganymede is probably the most striking example of evidence of expansion other than earth in our solar system. NASA published a complete surface map of Ganymede in 2005 that has strikingly clear visual clues of a celestial body in expansion. Neal Adams once again used this map to create an animation Ganymede's expansion. The tectonic pieces are clearly visible as different color surfaces which can be seen as having fractured and split apart as the moon grows. The pieces fit together like a jigsaw puzzle. [10]



Figure 10 - Ganymede's surface is easy to see the continents and the fracturing due to growth using visual clues which are quite easy to piece together

Leading People in the Field

Professionals

Samuel Warren Carey (Australian Geologist) - (died in 2002) the modern “father” of the growing earth theory. Carey is the giant in the field and is recognized by both the plate tectonics people and the growing earth people as a major contributor to the field of continental drift.

Dr. James Maxlow (Australian geologist) - Carey's premier student, who has written a scientific book documenting many scientific arguments for a growing earth from well before the ocean expansion. He is currently writing a second book.

Giancarlo Scalera - (Italian Geologist) publishing many accepted papers in the geological community and using the expanding earth for finding oil.

Professor Lance Endersbees – A world authority on rock behavior and tunneling who claims the world's water supplies as being ancient and coming from within the earth.

Vedat Shehu – An Albanian field geologist who has been working on evidence for a growing and developing earth.

Serious Amateur Scientists

Neal Adams (America Comic Book Artist) – Comic Book cartoonist turned scientist. Neal Adams has worked thirty years developing 3-D animations of growing bodies in the solar system and his theory for a mechanism on celestial body growth called “prime matter particles”

Dennis McCarthy (American) – A research associate at the Buffalo Museum of Science working on gathering compelling data for a growing earth.

Trans-Pacific Sister Taxa

There is very compelling evidence of ancient and actual flora and fauna that link the continents in the Pacific Ocean. Here are some of the more compelling arguments for what McCarthy calls Trans-Pacific Sister Taxa [11]:

- Narrow-range taxa is the study of lifeforms that have very limited traveling range over water and include purely freshwater fish; terrestrial vertebrates; shallow, bottom dwelling marine taxa that cannot survive in the deep ocean; weakly-flying birds; flowers that die with contact to salt water.
- Of more than 25,000 islands in the Pacific, only three are old enough to have once been in proximity with South America according to expanding Earth paleomaps: New Zealand, New Caledonia, Fiji.
- All problematic disjunctions of narrow-range taxa occur on those three islands.
- One of hundreds of Examples: the closest relatives of the Fijian banded iguana occur in California and Mexico. No other iguanas inhabit any other island in the Central or West Pacific.
- These taxa have crossed the full-breadth of a superocean -- a feat otherwise unknown in these types of organisms -- and end-up nowhere else.

Paleo-Magnetic Pole Evidence

James Maxlow, considered by many to be the world's top living geologist in the earth growing theory, was finally convinced about earth expansion by his study of paleo-

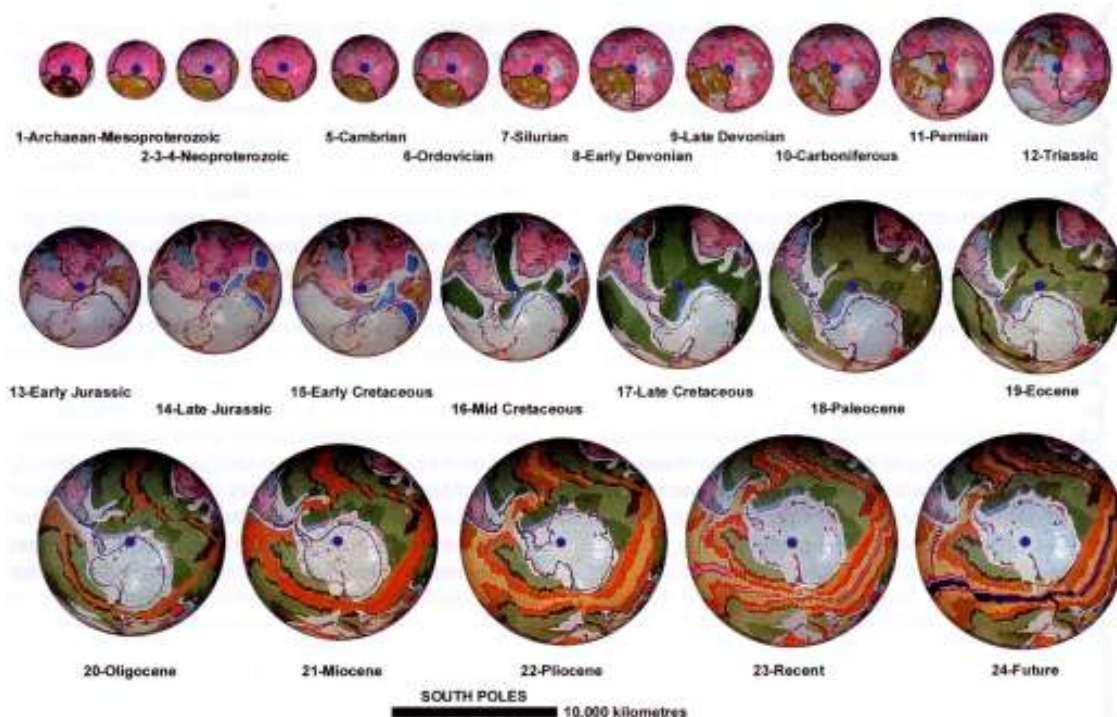


Figure 11 - The globes of Dr. James Maxlow and the location of the South Pole during the earth's growth

magnetic pole data. Paleo-magnetics is the study of the earth's fossil remnant magnetism which is preserved in rocks that contain small amounts of iron-rich magnetic minerals. These rocks acquire a permanent magnetism during crystallization and preserve the direction of the earth's magnetic field.

Dr. Maxlow studied this data from mainstream plate tectonics and verified that the South Pole as marked in Africa, down towards present-day Antarctica, fit nicely onto an expanding earth. Maxlow points out that the North and South poles are diametrically opposed on a growing earth while that is impossible on plate tectonic reconstructions. [12]

Space Geodetics

This is a very new field where a variety of methods are used to track the movements of continental plates. The interpretation of this data is difficult given that many the measurements are not congruent and the overall result of movement on the planet is hard to combine in one intelligible picture. Here are some of the methods used in measuring continental movement:

- Very Long Baseline Interferometry (VLBI)
- Satellite Laser Ranging (SLR)
- Lunar Laser Ranging
- GPS
- Doppler Orbitography and Radiopositioning integrate by Satellite (DORIS)

There is new data from plate tectonics itself that use Space Geodetics to show the moving of continental plates. The controversy from the growing earth community is the interpretation of these movements. There is a site on the internet that allows one to plot and look at an archive of crustal movement [13]

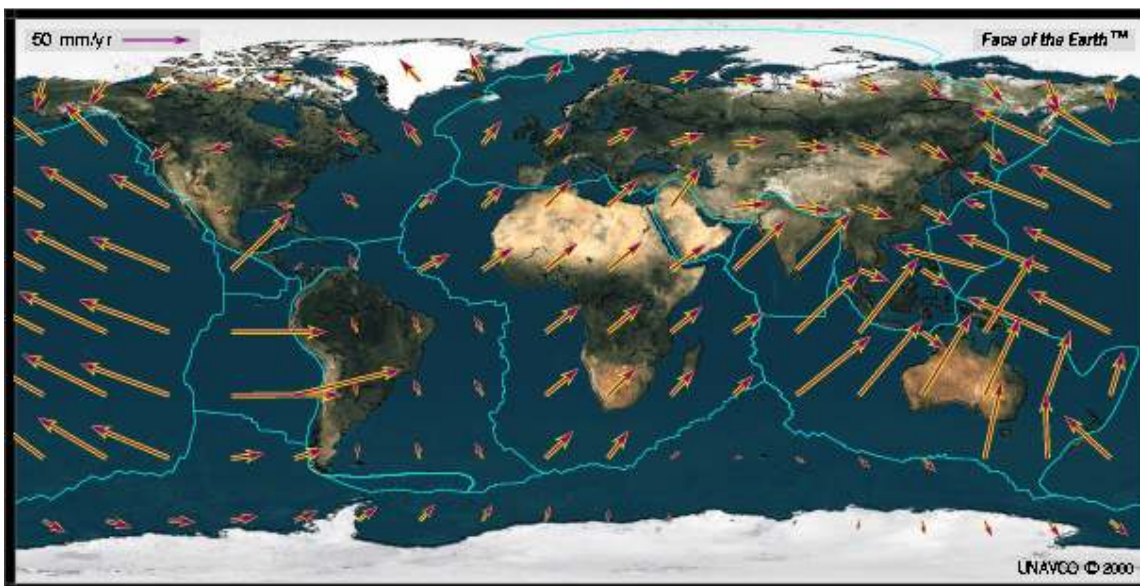


Figure 12 - Continental movement vectors from the Voyage website that allows users to generate different maps for display plate movements as measured by GPS

These movements are interpreted by Plate Tectonics advocates to support the constant radius of the earth yet there are many problems. Growing earth proponents have examined this data carefully and plotting all the movement vectors on a globe, have postulated that the earth is indeed expanding. [14]

A paper to be published in China in 2008 reports taking 10 years of GPS data and concluding that the earth is expanding by at least 0.5 cm/year [15].

Mountain Building (Orogen) And Continents

The growing earth theory has two very different ideas about tectonics than the mainstream plate tectonic theory on how mountains form, and the nature of continents.

Growing earth proponents say continents are a part of the crust of the earth and they are anchored and do not change in shape. If continents were floating on the mantle, there would be much more heat expected under continents and less heat under oceans. In fact the opposite is found and that confounds plate tectonics supporters.

Also, instead of mountains being formed by collisions of continents, in the growing earth theory, they are caused by the three dimensional flattening of the continents as the earth grows and the curvature gets smaller. Continents on a smaller orb will have much more curvature. With internal growth, continents are flattened causing them to crack and rift.

The result can be seen by looking at the elevation chart for entire continent cross section and a definite pattern of three dimensional flattening can easily be seen (figure 13) [16].

Mechanisms for Expansion

It is the opinion of this author that the most important question in science today is what is causing the growth of celestial bodies. Right now, there is no agreed upon answer but various theories as to what causes the growth. Most likely, it will end up being a combination of various ideas and principles.

Aether

Ivan Opsipovich Yarkovsky suggested that some sort of aether is absorbed within the earth

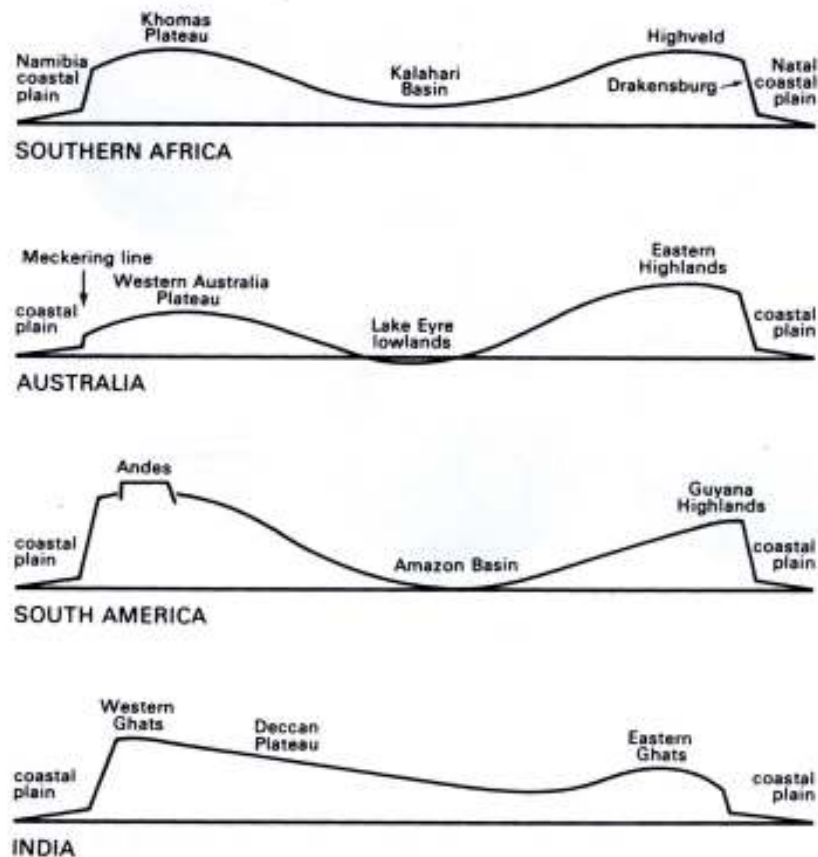


Figure 13 - Altitude profiles through the entire breadth of several major continents. Notice the profiles that are caused by 3-dimensional deforming.

and transformed into new chemical elements, forcing the celestial bodies to expand.

Accretion

Accretion is the process by which mass is gained by the physical accumulation of mass from other sources. There are various forms of accretion including space dust, mass from the Sun's solar wind, passing objects. The main problem with this theory for growth is the apparent lack of volume needed to account for all growth.

Dirac's

Paul Dirac, the famous British physicist suggested in 1938 that the Earth's gravitational constant had decreased over billions of years. In 1964, German physicist Pascual Jordan inspired by this idea suggested a modification of general relativity that would cause all planets slowly expand. [17]

Atomic Core Reactions

It is well known that stars expand as they grow old. Since it is also accepted widely that the earth's core is molten and hot like a star, it too could be going through some type of atomic process which is making it expand. This process is could explain the sudden and exponential increase of the earth during the last 200 million years.

Neal Adams Prime Matter

A new theory that has taken over 30 years to develop is the "prime matter" theory by Neal Adams. Neal Adams is a world-famous comic book artist who has dedicated a lot of time searching and theorizing a mechanism for the growth of celestial bodies. His work is based on Carl David Anderson's [17] discovery of the positron. Anderson was the youngest scientist to win a Nobel Prize at the age of 31 and discovered the positron and what is called today as "anti-matter". This led to the discovery a photon could transform into an electron and positron in effect, creating mass. Adams has come up with a theory he calls prime matter where prime matter transforms into matter at the center of celestial bodies that then move outward towards the surface where like atoms attract other like atoms forming a silicate crust, salt domes, and water.

Graviton

The Graviton model for gravity has led many to the conclusion that mass increase is a natural part of the process that we measure as gravitational force. This explains the growth of the earth prior to its sudden expansion. The problem with this being the only reason for a growing earth is the substantial evidence that the earth put on a sudden growth spurt about 180 MY ago and is increasing in size exponentially. The graviton model does not explain this at of yet.

Expanding Versus Growing

There is much debate in the growing / expanding earth community as to the terminology of expand versus grow. The word expand is the historical word used to explain that the radius of the earth is increasing versus being static. The term "grow" is a newer term that includes the increase of mass as well as size.

It is considered today by most all who subscribe to an increasing radius of celestial bodies that mass is also increasing. It should be noted that the term “matter creation” is not the actual creation of matter from nothing but a transformation of mass or energy.

Water, Oil, and Salt

One of the most natural questions when someone first learns of the growing earth theory is where did the water come from or go during expansion? The answer comes from what is commonly already thought happens in stars: larger and larger atoms are manufactured inside the core of stars. In stars, light atoms combine into heavier atoms and the same process must be happening in the core of the earth given that most think it very hot and star like.

It is believed that such a process may have created the water found on earth. This is much more acceptable to many scientists given that the only other accepted explanation is that the water on the planet came from comets or was “accreted”. The comet theory is problematic even in conventional science in that the number of comets needed to produce so much water is accepted as not being able to explain all the water present.

As for the growing earth, water is made inside the earth and seeps through constantly keeping up with the growth. Professor Lance Endersbee in his book “A Voyage of Discovery” [19] o claims that in fact, man is depleting the “ancient” water aquifers and that water aquifers in fact largely are supplied from inside the earth and not from rain water.

Similar ideas as to the origin of oil and salt deposits have been raised. Some geologists feel that oil is not from decay and pressure but comes from within the earth and is manufactured but in fact are from other known processes. Coal is recognized as being from plants but oil has several options as to its origins. Others geologists feel that salt deposits are not necessarily from ancient seas from manufactured within the earth.

This does not mean that man’s depletion of these resources will not happen. We don’t know for sure if oil, water, and salt are indeed produced within the earth’s core and what rate that happens but a growing earth and the study of a growing earth will help answer some of these questions.

Super-Sized Animals

One of the predictions of a growing earth where mass is increasing, is a reason why dinosaurs and other animals morphed into gigantism. Dragonflies with 2 foot wingspans, crustaceans the size of human beings – all of these can be explained by a smaller gravitational field. The Tyrannosaurus Rex is said to not be able in the current gravitational field to run [20]. Others talk about how the growing earth also interrupted dinosaur migration paths thus explaining the down fall of dinosaurs even before the asteroid 65 million years ago.

In a ground-breaking book, Stephen Hurrell deduces the gravity constant from the sizes of gigantic animals through several hundred million years [21] (Figure 14).

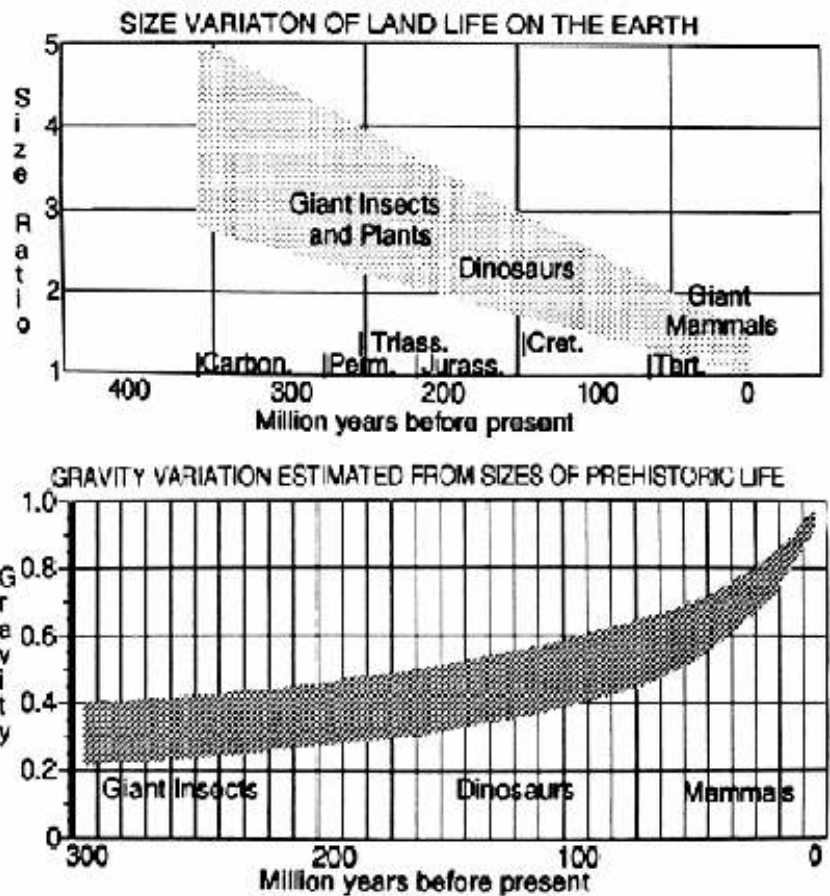


Figure 14 - Size charts of life on Land (above) and estimated gravity variation from physical sizes of life by Hurrell.

Barriers to the Growing Earth Theory

The growing / expanding theory for plate tectonics is almost universally not accepted by today's mainstream scientists. Yet this was not the case only a few decades ago.

Historical

The expanding or growing earth actually precedes the idea of a fixed radius. Yet today, the fixed radius idea is the accepted dogma. Ironically, the current theory has to recognize the modern era's greatest expansionist supporter Samuel Carey as contributing many of the accepted tenants to today's plate tectonics.

There have been several explanations by those who support the growing earth theory as to why the tides turned. Most people alive today who are growing earth supporters were involved in the debates between a growing earth theory and a fixed radius theory in the 1950s through the 1980s. Some explanations as to the turning point are political with the United States on one side, the Australians on another. Other growing earth supporters say it is because of a lack of an accepted mechanism for expansion. But as many point out including this author, a lack of a mechanism exists for gravity and light and yet we describe and accept the existence of both.

The current theory relies on one fundamental assumption: subduction exists.

Subduction

The biggest contention between the growing earth and the plate tectonic community is subduction. Subduction is the idea that some tectonic plates are moving back into the mantle being pushed by the expansion at the rifts found in all the major oceans of the world counteracting the ocean growth to keep the earth's radius to keep constant. This theory was needed by the plate tectonic supporters once ocean floor expansion was

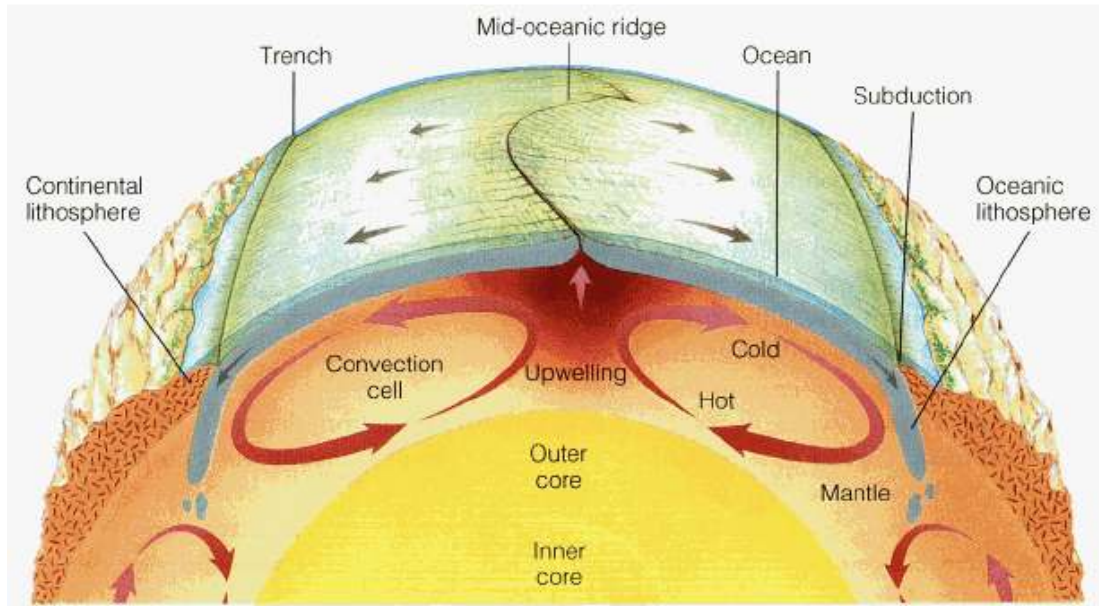


Figure 15 - Subduction Conveyor belt of the Pacific

confirmed as fact. Their solution can in the form of a “conveyor-belt” theory of plate tectonics having a mechanism in the form of convection currents in the mantle. Convection currents are theoretical and have never been proven as fact yet the community believes this theory.

The growing earth theorists have many points of contention with subduction. Here are some of them:

- **The Africa and Antarctica Enigma** – Africa and Antarctica are surrounded by ocean-floor spreading and yet it is agreed by the establishment that no subduction zones exists in this area. Where is this extra crust being subducted? [22]
- **Residual Ocean Floor** – “The mid-ocean ridges are greater in length and area than the known subduction zones and circle the entire globe in

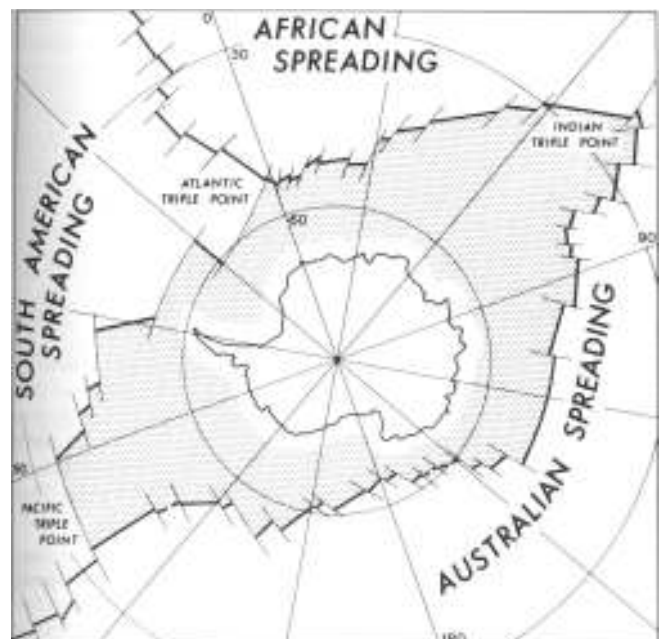


Figure 16 - The Antarctic plate with only spreading and no subduction

several configurations. Proponents of an expanding Earth argue that in order for the crustal material appearing there to subduct equally into the known zones, some evidence of a bottle-neck pile-up of oceanic crust should be visible nearing these subduction zones. Yet the entire ocean floor is smoothly surfaced, free of oceanic slab irregularities, indicating harmonious spreading unencumbered by such a process.” [23]

- **Subduction Zones versus Rifting Zones** - Using the best-case scenario for the maximum suggested subduction zones, expansion surpasses subduction by at least 33% so by their own standards, the current earth would be expanding. [24]
- **No Proof of a Mechanism** – It is also the case that there is no direct proof for the major mechanism for the current plate tectonic theory.[25] This is the same argument leveled by proponents of the fixed earth radius camp to the growing earth camp that no known mechanism exists for earth expansion. This is not so. There are numerous theories given for earth expansion including accepted mechanisms by current theory.
- **Ocean Sediments** – There is a lack of ancient ocean sediments that accumulate over time. If there is a conveyor belt of earth crust, there would be an accumulation of sediments at the subduction zone.
- **Subduction not Physically Possible** – Another argument against subduction is that it is impossible for the lighter crust to be thrust down into a mantle that is denser.

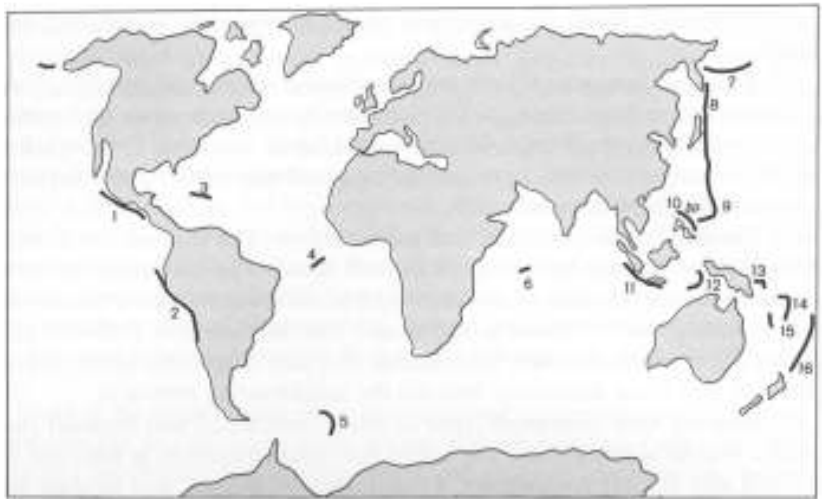


Figure 17 - The known subduction zones on earth according to Carey. Notice the small quantity as compared with growth or rift zones.

Growing earth proponents believe that subduction is either very rare or does not exist at all. They say that if it does exist, even by the standards of plate tectonics, there is not enough subduction to make up for the growth (figure 16).

Pangaea

Another area of contention is the super continent of Pangaea. Pangaea resulted in the fitting together of the continents on either side of the Atlantic rift. Samuel Carey in the 1950s tried desperately to fit the continents together into Pangaea and matching the known paleo-geological and paleo-taxa data known at the time that helped govern matching of continents. He could never fit the continents together without serious problems.

“At the Hobart continental drift symposium in March 1956, I first realized that Pangaea could not be reassembled on the present-size Earth without unacceptable anomalies, particularly the unavoidable gapping fore between Australia and East Asia. I therefore devoted myself to the study of expansion and its implications.” [26]

Adams has pointed out that fixed radius followers are forced to accept an adhoc drifting and morphing of continents in order to match up these gaps during certain times in the earth’s geological history. He also points out that if Pangaea did exist on the same size earth we have today, that the gravitation force during rotation would create a large island on the opposite side of the earth to compensate for the large mass of land on one side.

The growing earth theory does not have such problems.

No Known Growth Mechanism

The biggest contention that the plate tectonic community has with the growing earth community is a lack of mechanism for growth. This as put up as why the growing earth

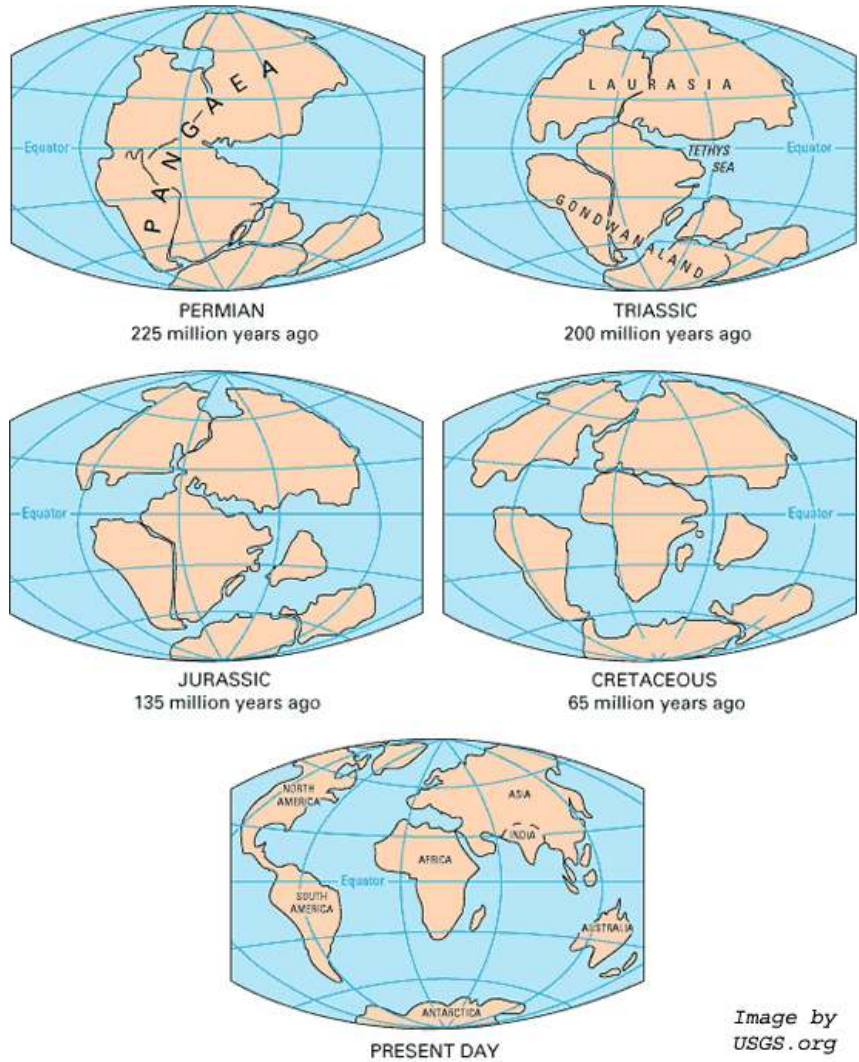


Image by USGS.org

Figure 18 - Pangaea as shown on the USGS website. This leaves an enormous Pacific Ocean and an unbalanced earth.

is not accepted. Although numerous mechanisms have been proposed for expansion for more than 100 years, there is no accepted or known mechanism for expansion.

Growing earth theorists claim that there is ample evidence for growing celestial bodies that not knowing a mechanism has not stopped the scientific community from accepting that light and gravity exists.

Also, there is no direct evidence for the mechanism of mantle convection that current fixed-radius earth proponents claim is the driving force for continental drift.

“It is an unfortunate human trait that require us to instinctively want ot now, or a least comprehend the cause well before the evidence, which far too often blinds us from fully understanding the physical evidence” – James Maxlow [27]

This Would Change Everything

As pointed out by Adams [28] among others, one big reason for not accepting the growing earth theory is that it would require a major shift in thinking in all of the sciences from the subatomic to the cosmological level. Since we do not have an accepted mechanism for a growing earth and universe, we would have to rethink much of science and that is painful to current dogma, careers, and reputations.

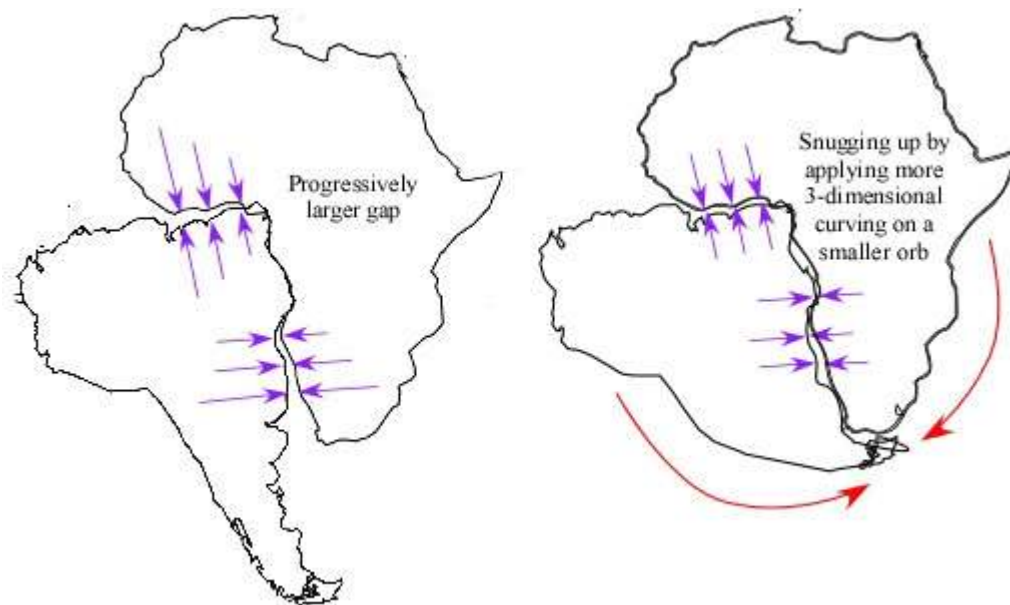


Figure 19 - The South American / Africa match shows that the continents have flattened and that they matched on a smaller orb.

New Explanations of Known Evidence

Having read many papers and books on this subject, it is the opinion of this author that there are two pieces of visual evidence that the earth is growing that have not been mentioned in this particular fashion in other literature: the 3-D curvature match of the South American and African coasts, and the Pacific Rift Contour Matches.

South America and Africa Curvature Match

Until now, this author has not found in any of the literature on the growing earth about what appears to be a 3-dimensionality of the South American and Africa fit. Normally, students of plate tectonics are accustomed to moving the continents together graphically showing the fit. Yet there is a subtle mismatch that gives away that the earth has indeed grown.

If you look closely at the South American / Africa fit, you will see that it does not fit perfectly in 2 dimensions. No matter where you match the continents, they start gapping with increased distance no matter where you first put them together (figure 19).

It is the observation of this author that this 2-dimensional mismatch is the result of the continents being less curved three dimensionally from the earth's radius having grown. The continents match only when they are deformed in a three-dimensional curvature that makes their coastlines match on a smaller globe. This subtle observation seems to be absent in current literature.

Pacific Rift Contour Matches

The curvature of the South America is reflected in the Pacific ridge which is admitted by all scientists to be expanding. If the Pacific is remaining the same size, and if the continents as they move and morph in shape drastically as the plate tectonic people say, then the expansion ridge in the Pacific should not be the same shape as South America, but in fact, it is. The only explanation is that the shape of the expansion ridge is proof, just as in the Atlantic, that the continents in the Pacific were once closer together (figure 20).

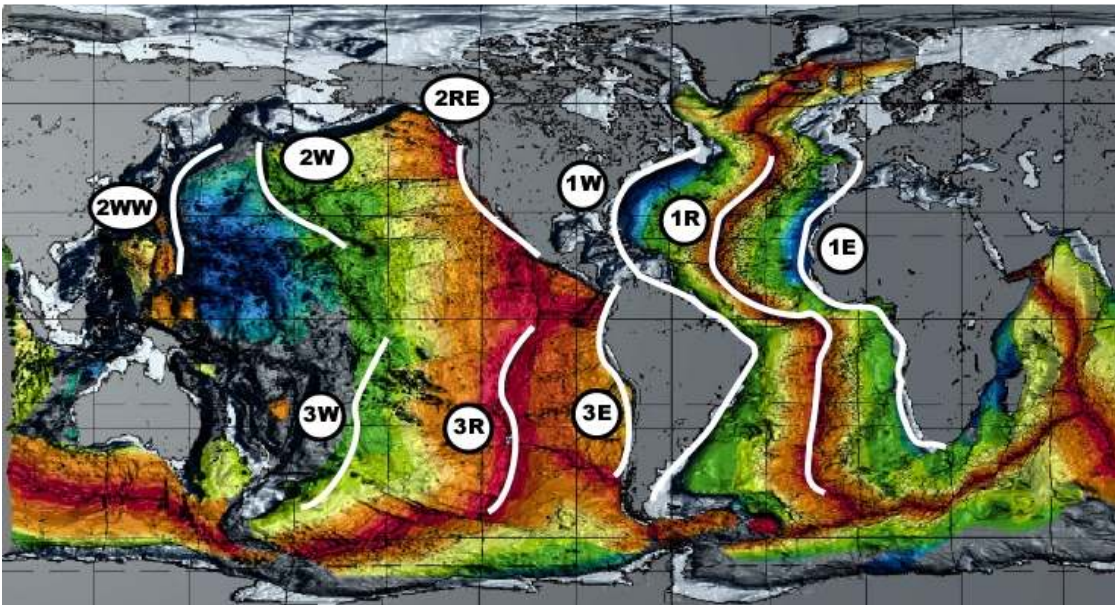


Figure 20 - Pacific Continent Rifts match all across the entire Pacific. Plate tectonics says these should not match since continents morph and the pacific does not grow. Atlantic Contours: 1 West = 1 Rift = 1 East; North Pacific Contours = 2 West / West = 2 West = 2 Rift / East; South Pacific Contours: 3 West = 3 Rift = 3 East. The Northern Pacific pattern is a bit different in that the United States has expansion only on the west side.

The continent of South America is not only reflected in the mid Pacific expanding ridge which is proof it has expanded, but the curvature of South America can be found on the other side of the Pacific expansion near Australia. Again, if Pangaea existed at all, the South American curvature would not be reflected in the mid Pacific expansion ridge and on the other side of the expansion ridge.

The same goes for the Northern Pacific with the exception that North America's coast is not reflected in the ridge, but is part of the ridge. Never-the-less, it is pointed out in other literature that the coastline is reflected several times in the Pacific itself.

Although a number of authors have mentioned this fact over many decades, they have not mentioned the fact that the contour matching of the continents in the Pacific in the expansion ridges themselves could never be explained by the "conveyor belt" notion of plate tectonics and subduction.

Conclusion

There are many more striking examples of problems that the growing earth theory easily explains that confounds and contradicts the now accepted plate tectonic theory. It is left to the reader to investigate these points which are too numerous for one paper.

It is no longer a matter of if the earth and other celestial bodies are expanding, it is a matter of why. Despite the slowness of the current scientific community to embrace this fact, the question of what is causing the earth other bodies in the universe to grow may be the biggest question in all of science today. It certainly is the most far-reaching and will become one of the biggest scientific paradigm shifts that we have seen in hundreds of years.

Books

1971 - Jordan, P. "The expanding earth: some consequences of Dirac's gravitation hypothesis" Oxford: Pergamon Press

1983 - Lester King, "Wandering Continents and Spreading Sea Floors on an Expanding Earth"

1988 - Carey, S. W., "Theories of the earth and universe: a history of dogma in the earth sciences", Stanford University Press

1994 – Steven Hurrell, "Dinosaurs and the Expanding Earth"

2005 - Vedat Shehu, "The Growing and Developing Earth: The Mass of the Earth is Increasing and the Planet is Growing"

2005 - Maxlow (student of Carey) "Terra Non-Firma Earth: Plate Tectonics Is a Myth"

2005 – Professor Lance Endersbee, "A voyage of Discovery"

References

[1] Continental Drift, Wikipedia, <http://en.wikipedia.org>

[2] McCarthy, Dennis (2004), 4th Revolution Website, <http://www.4threvolution.com>

- [3] NOAA website, <http://www.ngdc.noaa.gov>
- [4] Shehw, Veduh (2005), The Growing and Developing Earth, page 115.
- [5-7] Adams, Neal (2002), <http://www.nealadams.com>
- [8] NASA website, <http://www2.jpl.nasa.gov/galileo/moons/europa.html>
- [9, 10] Adams, Neal (2002), <http://www.nealadams.com>
- [11] McCarthy, Dennis (2004), 4th Revolution Website, <http://www.4threvolution.com>
- [12] Maxlow, James (2005), Terra Non-Firma Earth, page 151
- [13] UNAVACO Consortium of research Institutes website.
http://sps.unavco.org/crustal_motion/dxdt/
- [14] Maxlow, James (2005), Terra Non-Firma Earth, page 100
- [15] The expanding Earth: evidences from temporary gravity fields and space-geodetic data (2008), W.B.Shen(1,2), W.Chen(1), Zh.G.Zhang(1), J.Li(1), Dept. of Geophysics, School of Geodesy and Geomatics, Wuhan Univ., Wuhan 430079,
- [16] Maxlow, James (2005), Terra Non-Firma Earth, page 80
- [17] Jordan, Pascual (1971), The Expanding Earth: Some Consequences of Dirac's Gravitation Hypothesis
- [17] Anderson, Carl David (1999), “The Discovery of Anti-Matter”
- [19] Endersbee, Lance (2005), “A Voyage of Discovery”
- [20] 4th Revolt, Dennis McCarthy
- [21] Hurrell, Steven (1994), Dinosaurs and the Expanding Earth, page 45.
- [22] Carey, Samuel (1985) Theories of the Earth and Universe, page 175.
- [23] Carey, Samuel (1985) Theories of the Earth and Universe, page 174
- [24] Shehw , Veduh (2005), The Growing and Developing Earth, page 106.
- [25] E. N. Lyustikh (1967) Criticism of Hypotheses of Convection and Continental Drift
Geophysical Journal International 14 (1-4), 347–352 doi:10.1111/j.1365-246X.1967.tb06250.x
- [26] Carey, Samuel (1985) Theories of the Earth and Universe, page 143
- [27] Maxlow, James (2005), Terra Non-Firma Earth, page 100
- [28] Adams, Neal (2002), <http://www.nealadams.com>